

HILLTOP NEWS



In This Issue:

Upcoming Events	2
China!	3
Support Church Mortgage Reduction Efforts	3
New Care Groups Will Form Soon	4
Church Bus Replacement	4
My Experience With The Ahmadiyya Muslim Community	5
Wednesday Night Out Returns	5
New Hope Ministries	6
Fellowship & Service Opportunities	7
Local Opportunity with a Global Impact	8
Slate Hill & Cumberland Vista Events	10
New Blood Pressure Schedule	11
AgingCare.com	12
Camp Hebron Homecoming	13
Camp Hebron Senior Autumn Retreat	14
Sara Brubacher Update	14
School Supply Drive	15
Bike To The Beach Or Bust	15
Church Directory Update	15
Respite Care, Sing It Loud	16
High School Graduates	17
Women's Fellowship	17
Connect Engage Relate	18
Congratulations Jared & Rebekah	19
Safe Church Update	20
Thank You	21
Birthdays & Anniversaries	22
2015-16 Ministry Appointments	23

1352 Slate Hill Road

Camp Hill, PA 17011

Phone: 717-737-8150

E-Mail: slatehill@paonline.com

Website: www.slatehillmennonite.org

Office Hours:

Tuesday through Thursday 9:00-4:30;

Friday by appointment

Pastor: Lynn Shertzer

Associate Pastor of Community Life: Joy Fasick

Administrative Assistant: Fran Leiter

Lay Elders: Jen Fredrick, Dave Bauman, Caleb Miller,
Ron Hershey

Staff E-mail Addresses:

Lynn Shertzer: shertzer@paonline.com

Joy Fasick: jfasick@comcast.net

Administrative Assistant, Fran Leiter: slatehill@paonline.com

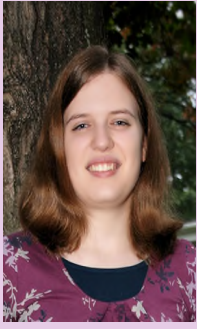
Church Office Hours:

Monday	No office hours
Tuesday	9:00 AM - 4:30 PM
Wednesday	9:00 AM - 4:30 PM
Thursday	9:00 AM - 4:30 PM



Upcoming Events

- Sept. 5** Ladies Prayer Breakfast at Rosalie Roland's; 104 Lavynndon Lane, Mech. ~ 8:00 AM
- Sept. 6** College Student Welcome Luncheon
- Sept. 12** Blood Drive ~ 10:00 AM
Chicken BBQ ~ 11:00 AM
- Sept. 15-17** Sr. Citizen Autumn Retreat, Camp Hebron
- Sept. 16** WNO (Wednesday Night Out) resumes
- Sept. 19** Men's Fellowship miniature golf outing at Sport's Emporium in Carlisle ~ 5:30 PM
- Sept. 20** Peace Sunday
- Oct. 2** Cumberland Vista: Pumpkin Painting ~ 6:30 PM
- Oct. 3** Camp Hebron Homecoming festival ~ 1:00-8:00 PM
- Oct. 4** World Communion Sunday
- Oct. 15** CROSS Banquet, Mech. BIC (1050 S. York St) ~ 6:30 PM



China!

Luisa Miller will be a participant of the EMU cross-cultural team heading to China this fall. You can follow the group's activities by visiting the website: www.emu.edu/crosscultural where you will be able to read student journals and view photos. Follow them as they experience culture and people through personal interactions, learn some of China's history, and participate in classroom study, home stays, service projects and travel extensively. Most of their time will be spent in a medium-sized city in Sichuan province but they plan to visit Beijing, Shanghai, Hong Kong, Xian, Nanjing, Suzhou, Kunming, and possibly Lhasa.

Please keep Luisa and the team in your prayers as they travel and adjust to many different surroundings, languages, cultures, and experiences.

Support Church Mortgage Reduction Efforts



Support the mortgage-reduction effort by purchasing Giant, Weis, or Karns gift cards. Cards can be redeemed for groceries, gas, or gift cards to other stores to meet your gift-giving needs. You pay face value for the cards (\$25, 50, or 100) but 5% of your purchase price stays right here at Slate Hill and goes toward reducing the church mortgage.

Get more out of things we all do -

eating,



driving,

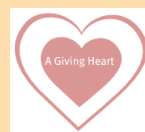


and gift giving.



Participation in this program will benefit the church without costing you a cent more! Look for Gene Musselman between church services to purchase gift cards. The more participants we have in this program, the faster the reduction to our mortgage!

Make your eating, driving, and gift giving do more!





**SMALL
GROUP**
Lineup

New Care Groups will form soon!!!

In October, new Care Groups will form ... there is no better time to join a Care Group!

Should I be in a Care group?

We highly recommend people join a Care Group. Being part of a Care Group can help you connect to the church, deepen relationships, develop accountability, and strengthen your support system as you walk together through life. We gladly welcome new attendees of Slate Hill to participate in a Care Group!

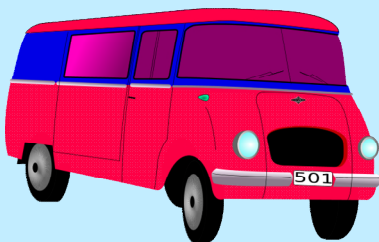
Should I be a Care Group leader?

Care Groups are very flexible in structure. Each group determines when and how often they wish to meet. In order to accommodate placing more people in Care Groups, it would be wonderful to have a few more leaders. Contact Jen Fredrick at jendfredrick@gmail.com if you have any questions regarding this.

Should I fill out a Care Group survey?

You may have seen a Care Group sign up sheet in your church mailbox or in the weekly e-mails. We are gearing up to form new care groups soon and your feedback is important to us. Please take a minute to complete the survey even if you are already in a Care Group and want to continue with your current group.

Submitted by Jen Fredrick



CHURCH BUS REPLACEMENT

The need is immediate; a suitable vehicle in good working order will cost \$20,000. This need has not been a budgeted expense, therefore designated gifts are needed and very much appreciated.

My Experience with the Ahmadiyya Muslim Community

Having received a personal invitation, I decided to attend the Ahmadiyya Muslim Community World Conference at the Harrisburg Farm Show on Saturday, August 15th. Why would I accept such an invitation? Why would a follower of Christ agree to attend? Thanks for asking! Actually, this was not a difficult decision for me to make. I felt as though I should attend....especially as a believer and witness to Christ.

So what happened? I was greeted with genuine hospitality. During a two hour program, guests were provided the best seats in the house. I learned that the Ahmadiyya Muslim Community is currently prohibited from worshipping in Pakistan, Indonesia, Egypt and Saudi Arabia. This Muslim Community clearly denounced the actions of ISIS, ISIL, Al Qaeda, the Taliban and all other extremist groups. They clearly stated these groups are not Muslim as they don't promote peace.

After the program, I was invited to dinner which consisted of spicy kebobs, peas and corn, a pasta dish and a rice/ chicken dish served family style. I had the opportunity to engage with two men from Toronto, Canada and ask more questions about their beliefs.

Though I have no intention of converting to the Muslim faith, I learned a lot about this particular community. I also believe the greater Mennonite community may want to reflect on their approach. They extended a warm invitation to me, provided me with a hearty meal, and asked me for nothing in return. The Ahmadiyya Muslim Community has the tagline "Love for all, hatred for none."

Submitted by Tom Miller

"You have heard it was said, 'Love your neighbor and hate your enemy.' But I tell you, love your enemies and pray for those who persecute you." Matthew 5: 43-44

WEDNESDAY NIGHT OUT (WNO) RETURNS!

On Wednesday, September 16, our Wednesday Night Out program begins again. Everyone is invited to attend this mid-week meal and service. Meals are served between 5:45 – 6:30 PM. Children's clubs and adult studies follow at 7:00 till 8:00 PM. Childcare is provided for infants and toddlers.

You are welcome to come and enjoy the meal and fellowship with others even if you do not plan to attend the evening programs. Meal donations of \$4.00 per adult, \$2.50 per child, or \$12.00 per family are suggested.

Children will pack school kits to complete the MCC School Kit drive on the first WNO. The adult Bible study will be lead by Joy Fasick.

Impact

Recently, New Hope was able to give a donated car to one of our guests. The family's only vehicle had recently become inoperable, and repairs



were not recommended and too expensive. This left the one and only wage-earner of the household without transportation to get to work, resulting in the loss of her job. It also left the income-less mother trying to get rides to and from medical appointments for her and her family. The joy, the relief, the gratitude that that donated vehicle has given has changed this family's life. After receiving the car, the mother said, **"We're going to be alright now. Thank you!"**

Wish List

School Supplies

- Canned Vegetables
- Canned Fruit
- Canned Meat
- Spaghetti Sauce
- Peanut Butter
- Jelly
- Shampoo
- Conditioner

Do you have a couple of hours to give?

The following volunteer opportunities are available:

Stability Program Teacher & Follow-up

Center Cleaning

Computer Teacher

Cooking Class

Seasonal Help with Produce

Volunteer applications can be obtained by visiting our website or by stopping by the center.

Thank you for blessing our ministry!
~ Mary



FELLOWSHIP AND SERVICE OPPORTUNITIES AT SLATE HILL

All women are invited to breakfast by the pool at the home of Rosalie Roland (104 Lavynndon Lane, Mech.) on Saturday, Sept. 5 at 8:00 a.m. Megan Myers will be leading the devotional. Bring your suit if you'd like to swim. Sign-up on the bulletin board and don't forget to invite a friend!

We will welcome college students to Slate Hill Sept. 6 with a luncheon. Please bring one hot and one cold dish to share. Desserts are also welcome. Enjoy this opportunity to welcome and interact with new and re-

Volunteers are needed for the Sept. 12 chicken BBQ. Please sign up at the bulletin board to assist with this mission fundraiser. Please invite others by handing out flyers to friends, neighbors, and family. Thanks!

Slate Hill men and boys are invited Saturday, Sept. 19 for miniature golf at the Sports Emporium. Male friends, neighbors and relatives may come too for a great evening of fun, food and fellowship. Meet at the Sports Emporium at 5:30; tee time to commence shortly after. Please sign up on the bulletin board by Sept.13 if you plan to come. Any questions should be directed to Paul Zimmerman at pmzilz@gmail.com or 697-0896.

Do you enjoy visiting with people? Do you like to hear stories of yesteryear? If you answered yes to either of these questions, volunteer for our visitation ministry. You will be blessed by regular interaction with Slate Hill seniors. Your commitment can be as little as once a month and you choose the day and time. To learn more or join the team, contact Joy at jfasick@comsast.net.

Calling all sixth graders! Slate Hill connects interested youth with mentoring adults beginning in grade six. If you are entering sixth grade – or any grade above that but do not have a current mentor – and would like to learn more, please contact Joy at jfasick@comcast.net.

Check out activities, needs and opportunities at Cumberland Vista on pages 9-10 to lend a hand and enjoy new friendships!



Local Opportunity With Global Impact

The following two events are most critical for the success of tech4Tanzania's work this year! Are you able bodied, loving, strong, of good cheer, and can give of your time? Then you have several opportunities to do great good. We won't lie ... the work is heavy, hot, and dirty but the pay is eternal! Add a few gems to your crown by helping us ship goods to Africa.

Thursday, September 3

Hospital beds and heavy equipment need to be moved from the Pinnacle Health warehouse to Mission Central. The equipment is located on the top floor and must be taken through narrow aisles filled with clutter to the freight elevator then out into a busy downtown Harrisburg alley and loaded into a lift-gate truck then unloaded at Mission Central in Mechanicsburg. Our appointed move time is Thursday morning, September 3rd from 8:00 AM till noon (before the real heat of the day). Wear your work duds and gloves, bring plenty of water, and perhaps a dust mask. And, if you have like-minded friends, please bring them along to help too!

Thursday, September 24

(Time to be determined)

Volunteers are needed to load the forty-foot long ocean going container bound for Tanzania. We are allotted only two hours from the time the doors open and the truck is backed onto the dock. Experienced personnel will handle the large and heavy items that are packed on pallets with forklifts. But boxes of books, medical supplies, microscopes, etc. must be "stuffed" into open spaces around the big uncrated things to keep the load from shifting while at sea. This is fast work requiring a cooperative work style. The container will be packed for six delivery points which will require packing by color code attention.



For more information or to volunteer, please contact:

Randy Barr

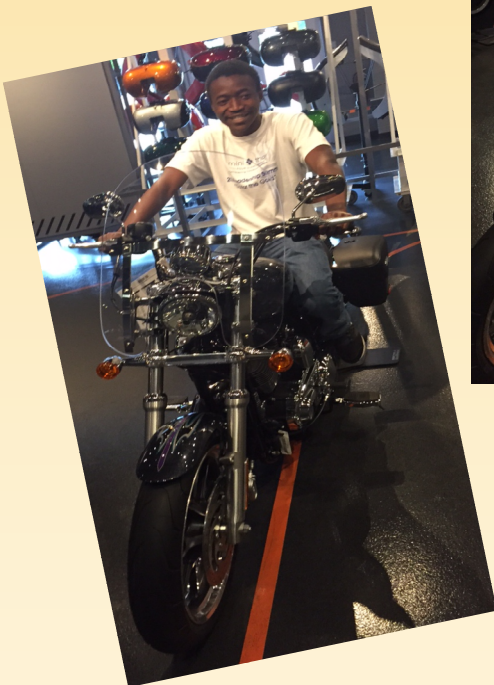
tech4tanzania.org

rw.barr@yahoo.com

717-903-9698

... and more tech4Tanzania news

Having heard the adage, "all work and no play makes Jack a dull boy" for the first time, Randy decided to take Ray, Eliezer and John to the Harley plant in York and two potato chip factories in Hanover just for fun! Vroom, vroom; yum, yum. No dull guys here. Some might even say, sharp as a tack...and flat-headed, too. Just kidding.



Stay tuned for more tech4Tanzania events this fall.

Submitted by Randy Barr



Joshua Dean (purple shirt) with Cumberland Vista residents (L to R) Lonie, Chris and Brian



Jimmy Redline flexes his muscle for Janet Zimmerman.

Slate Hill Mennonite Events with Cumberland Vista 2015-16

Everyone at Slate Hill is invited to befriend the wonderfully grace-filled residents of Cumberland Vista. For those who may be unfamiliar with Cumberland Vista, it is a Christian group home in Dillsburg for eight intellectually disabled adults. A variety of special events are planned this year to strengthen the ties between Slate Hill and these neighbors. Why not pick an event that interests you, or looks like fun, then come on out and get your feet wet experiencing some of God's grace.

2015

- | | | |
|----------------|---------------|--|
| Sept. 4 | 6:30PM | Bonfire with S'mores, Skit, Songs, Snacks at Cumberland Vista |
| Sept. 6 | 9:30AM | Cum. Vista joins Slate Hill for worship |
| Oct. 2 | 6:30PM | Pumpkin Painting at Cumberland Vista |
| Oct. 4 | 9:30AM | Cum. Vista joins Slate Hill for worship followed by a Special Needs Sunday School Class |
| Oct. 15 | 6:30PM | CROSS Banquet, Mechanicsburg Brethren in Christ, 1050 S York St., Mechanicsburg PA 17055. RSVP by Oct. 8 at (717) 432-2822. |
| Nov. 1 | 9:30AM | Cum. Vista joins Slate Hill for worship followed by a Special Needs Sunday School Class |
| Nov. 6 | 6:30PM | Skit, Songs, Snacks at Cumberland Vista |
| Dec. 4 | 6:30PM | Christmas Cookie Decorating at Cumberland Vista |
| Dec. 6 | 9:30AM | Cum. Vista joins Slate Hill for worship followed by a Special Needs Sunday School Class |

2016

- | | | |
|---------------|---------------|--|
| Jan. 3 | 9:30AM | Cum. Vista joins Slate Hill for worship followed by a Special Needs Sunday School Class |
| Jan. 9 | 6:30PM | Pizza and MOVIE NIGHT at Cumberland Vista |
| Feb. 5 | 6:30PM | Skit, Songs, Snacks at Cumberland Vista |
| Feb. 7 | 9:30AM | Cum. Vista joins Slate Hill for worship followed by a Special Needs Sunday School Class |

March 4	6:00PM	Set up for Spring Fling with SHMC volunteers only. Pizza provided
March 5	12-4:00PM	SPRING FLING at Slate Hill Mennonite
March 6	9:30AM	Cum. Vista joins Slate Hill for worship followed by a Special Needs Sunday School Class
April 1	6:30PM	Skit, Songs, Snacks at Cumberland Vista
April 3	9:30AM	Cum. Vista joins Slate Hill for worship followed by a Special Needs Sunday School Class
May 1	9:30AM	Cum. Vista joins Slate Hill for worship followed by a Special Needs Sunday School Class
May 6	6:30PM	Homemade Ice Cream, Skit, Songs, Snacks at Cumberland Vista

TO BE ANNOUNCED: HERSHEY BEARS Game (on a Sunday afternoon)
 HARRISBURG SENATOR'S GAME (on a Sunday afternoon)

CUMBELAND VISTA is one of three Christian group homes for intellectually disabled adults operated by C.R.O.S.S. Inc. (Christian Residential Opportunities & Social Services). Cumberland Vista is located behind Cumberland Valley Brethren In Christ Church, at the top of the hill.

Directions to Cumberland Vista from Rt. 15 and Lisburn Road

Head west on Lisburn Road 1.3 miles.

At traffic light at Williams Grove Road make a LEFT (heading south) for 2.1 miles.

At the stop sign at 74 North (Carlisle Road/York Road) make a RIGHT. Go 0.5 miles.

Slow down as you approach the **Cumberland Valley Brethren In Christ Church** on your left.

Make a LEFT into the church parking lot and keep going straight up the driveway and up the hill.

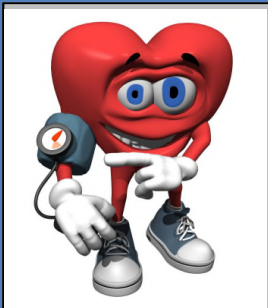
The driveway will eventually turn to the right and then curve to the left up the hill.

Cumberland Vista is at the top of the hill.

Park either in the back lot (basement level) which you will come to first OR in the top parking lot (which is actually the front of the house but faces the back of the property).

We usually begin meeting in the basement. For special events (where we will be cooking/baking), we usually converge on the first floor which is the top entrance.

For more information, contact Ulli Klemm (724) 464-8748 or ulliklemm@yahoo.com



New Schedule for Blood Pressure Checks

Blood pressure checks will now be conducted the **second Sunday** of each month in the conference room. Stop by to track yours.

Checklist: Emergency Planning for Frail Elders

Marlo Sollitto

In addition to the standard supplies of food, water and first aid kits, if you have an elderly or disabled relative living with you or nearby, there are some additional precautions to consider when preparing for natural disasters and emergency situations.

- **Wheelchairs:** If your parent is in a wheelchair or has mobility problems, plan for how he or she will evacuate. If you use a motorized wheelchair, have a manual wheelchair as a backup.
- **Durable medical equipment:** Most emergency shelters do not have durable medical available on site. You must bring your own.
- **Blind or visually impaired:** Keep an extra cane by the bed and attach a whistle to it. Remind your parent to exercise caution when moving, as paths may have become obstructed.
- **Hearing impaired:** Keep extra batteries for hearing aids with emergency supplies. Store hearing aids in a container attached to the senior's nightstand or bedpost, so they can be located quickly after a disaster.
- Have ID information on hand for the elderly person as well as copies of relevant emergency documents, evacuation plans and emergency health information card.
- Talk to your doctor about stocking up on a week's supply of all prescription medication.
- Make sure elders know where the first aid kit and emergency supplies are located.
- Establish a communication plan. Your family may not be together when disaster strikes, so plan how you will contact one another.
- If your relative has Alzheimer's or dementia, know that even cognitively impaired people often times have an innate understanding that something is wrong. Remain calm during an emergency. Explain what is happening clearly and simply, but don't expect them to remember specific details. Validate their concerns, but provide clear direction without condescending or losing patience.
- If your elderly parent lives at home alone and receives assistance from a home healthcare agency, find out how they respond to an emergency. Designate backup or alternative providers that you can contact in an emergency.
- If your relative lives in a nursing home or assisted living, check the facility's website for updates and 800-numbers that are typically established for communication with families.

The Community for Family Caregivers is an online forum created to Support Caregivers of Elderly and Aging Parents. The material of this web site is provided for informational purposes only. AgingCare.com does not provide medical advice, diagnosis or treatment; or legal, financial or any other professional services advice.

© 2014 AgingCare, LLC All rights reserved.

*Submitted by Deb Saline
Printed with Permission*



Camp Hebron Homecoming

Saturday, October 3, 2015

1:00 PM - 8:00 PM

Bring your family and friends this Fall Festival event! Homecoming will be filled with family-friendly fun, nostalgia, good eats & great music. The night will be capped off with a concert filled with reclaimed hymns by the popular bluegrass/folk band, *The Walking Roots Band*.

SCHEDULE (SUBJECT TO CHANGE):

1:00 - 3:00 pm: Face Painting, Guided Hikes, Hiking Challenges, Ga-Ga, Pony Rides, Wagon Rides, & other activities

3:00 - 4:00 pm: Gold Rush, Corn Hole Tournament, Horseshoes

4:00 - 5:00 pm: Free Chicken BBQ @ the A-Frame. (Donations accepted but **reservations/meal tickets are required!** (Order at 717.896.3441 or at www.camphebron.org/events/2015/3/homecoming)

GREAT ACTIVITIES FOR EVERYONE!

Face Painting

Guided Hikes

Ga-Ga

Corn Hole Tournament

Gold Rush

Pony Rides

Wagon Rides

Bonfire & S'mores

Paint a Pumpkin

Horseshoes

Concert



Senior Autumn Retreat 2015 at Camp Hebron

Senior citizens aged 60+ are invited for a few days of relaxation, inspiration and fellowship with old friends and an opportunity to make new ones on September 15 -17. Ken Martin, who is passionate about ministering to Seniors, will share during the event on the theme of “Encouraging One Another” based upon 1 Thess. 5:11.

Available retreat activities may include a service project; free time and games; ping pong, shuffleboard, and horseshoe tournaments; a concert; campfire with S’mores; a wagon ride; boating; trail rides/lessons; archery; crafts; rocket building and launch; bingo; a hymn sing and a time of sharing and reflection along with communion and a prayer circle. You may attend the entire retreat (\$200 per person) or come for the day of your choice (\$42 per person). Register online at <http://www.camphebron.org/events/2015/09/autumn-retreat>.

And this from our friend —

Eight months after leaving Palestine and Israel I am doing well. I have much more energy and I am ready to engage with real life again. :)

I very recently moved to Kitchener-Waterloo, Ontario, to be near friends and family, including my brother, David. I will be looking for work there.

Thank you for your prayers and support during the difficult last year. The people of Palestine and Israel remain close in my heart and I hope you continue to support MCC's vital work there.

Sara Brubacher

SCHOOL SUPPLY *Drive*

It's Almost Back-to-School Time!



The MCC School Kit drive is back in full-swing. The following donations are being sought for each kit which will be given to dispersed peoples or those affected by disaster.

- ◆ 4 – spiral bound, 70 page, ruled notebook
- ◆ 8 – unsharpened #2 pencils
- ◆ **1 – plastic ruler, flexible and marked with centimeters and inches**
- ◆ 1 – box of 12 colored pencils
- ◆ 1 – large eraser

WE ESPECIALLY NEED MORE RULERS!

Please place your donations on the collection table in the fellowship area before Wednesday, Sept. 16. Thanks so much for your support!

Church Directory Update

Please update your directory to show Gene Musselman's correct phone contact information. He has discontinued his home phone (697-1188) and may be reached now by his cell 717-576-9193.



Bike to the Beach or Bust

On Sept. 18th, Ulli Klemm will join a number of bicyclists, many from the Lancaster area, on a one-day 125-mile long bike ride from Black Rock Retreat Center to Rehoboth Beach. Why?? To raise money to enable children who cannot afford to attend a week of summer camp to do so. If you would like to sponsor Ulli, make a check payable to Black Rock Retreat and place it in Ulli's mailbox. Happy cycling all!



Over the next few months, Slate Hillers and friends will have an opportunity to reach into parts of the community that are quite hidden from the mainstream. One such place is the Life Time Adult Day Care center behind Denny's Restaurant on the Carlisle Pike in Mechanicsburg.

Ulli Klemm was introduced to Life Time several years ago as part of the Mechanicsburg Middle School's Martin Luther King Day of Service. At the time, he was a chaperon for middle school students. Ulli has been asked year after year to return with his guitar to lead singing. In January 2014, Ulli asked if they would welcome entertaining the clients more than once a year. The answer was a resounding YES, and Ulli, with his guitar, has developed into a monthly ministry at the Life Time Adult Day Care center.

Catering to the elderly and those with developmental disabilities, Life Time provides compassionate care and support to its clients. Some of the clients have physical and psychological needs. Others have medical concerns, or suffer from dementia, social isolation, inactivity and the risk of falling. Caretakers value being able to drop off a family member at Life Time. This enables caregivers to continue to work or to get a needed break, all the while allowing Life Time participants to remain in their own families and communities.

Ulli invites you to join in the fun and rewarding opportunity to entertain this most appreciative audience on any of the following afternoons over the next few months:

- Fri., Sept. 25, 1:30-3:00PM
- Fri., Oct. 23, 1:30-3:00PM
- Fri., Dec. 18, 1:30-3:00PM
- Thurs., Jan. 28, 1:30-3:00PM

Life Time Adult Day Care is located at 3 Crossgate Drive, Mechanicsburg PA 17050. Crossgate Drive is a small road that is sandwiched between Denny's Restaurant and T-Mobile on the Carlisle Pike. It is housed on the first floor of a two-story office building (labeled NRA).

Contact Ulli Klemm if interested in joining this missional activity at ulliklemm@yahoo.com or (724) 464-8748 Cell, (717) 728-0381 (Work)



2015 HIGH SCHOOL GRADUATES

The following students graduated from high school in June and are headed to various colleges for higher education.

Marc Hershey – Eastern University

Faith Onelangsy – University of Pittsburgh

Elise Petersheim – Lee University

Todd Rexroth – HACC

Austin Sachs – Eastern Mennonite University

Noah Shertzer – Belmont University

Congratulations to all of them! Please keep them in your prayers as they adjust to college life and that they may be a light of Christ unto the world.

Submitted by Kathy Krug

WOMEN'S FELLOWSHIP

The Women's Fellowship and Bible Study group meets twice a month. Starting in September, the meeting dates will be changed to the FIRST AND THIRD FRIDAY morning of every month. The group begins with coffee and snacks at 9:30 then has Bible Study from 10:00 to 11:00 followed by prayer till close at 11:30. After wrapping up the current study in September, the group will be choosing a new topic. Free childcare is provided.

If you have any questions, please contact Joy Fasick at 717-323-0150.



Connect Engage Relate is our theme for 2015. We are called to spread the Good News of salvation – directly as disciples (Matthew 28:19-20; Acts 1:8) and also as imitators of Christ (1 John 2:6; John 13:34).

Each of us responds to this call in different ways, but the Connect Engage Relate team is encouraging everyone in the Slate Hill family to stay alert to the opportunities God provides. Look for times to initiate caring interactions, to learn about others' experiences and needs, to share how God has worked in your life, and to share God's Story.

For some new ideas or reminders, check the lists below. You'll find a list for adults and a list for youth, but many of these ideas work for any age group. Remember that it's also fine to go "off the list" and follow the other ideas that God gives you! Either way, take time on Sunday mornings to commemorate the opportunities God provides by placing a stone during the offering time. This is a way to give thanks for God's provision and presence in each interaction.

Each week during the month of September...Connect Engage and Relate with the people God has put in your life!

Adults:

Volunteer at the chicken barbecue on September 12. You'll meet many new neighbors!

When you get to Wednesday Night Out dinner or a fellowship meal, find someone you don't yet know to sit with. You might be helping a visitor feel right at home!

Send a handwritten note, email, or facebook private message to encourage someone.

Invite a not-yet Christian or someone who has separated from God or the church to come to Wednesday Night Out.

Share an encouraging scripture with a friend who is going through a difficult time.

Have new friends over for a Labor Day picnic or go together to watch fireworks.

Walk instead of drive. Notice the people you see and include them in conversation or in your prayers.

Post one of these prayers – or a similar one you prefer – on your coffee pot, cereal box, or somewhere else where you'll see it and pray it each morning for the week.

“Lord Jesus, as I interact with others today, help me to see them as you do.”

“Open my eyes, God. Help me see an opportunity to share your love.”

You might enjoy this song – <https://www.youtube.com/watch?v=VQwRgXUAk5s>

Men, invite a friend to join you for Miniature Golf on September 19.

Ladies, invite a friend to breakfast by the pool on September 5.

Something else that God lays on your heart!

Youth:

Invite a friend who doesn't yet know Jesus or have a church home to come to Wednesday Night Out.

Make plans to attend a high school football game with one of the new kids in your class.

Pray daily for a week for one teacher and one student in your school.

Keep your eyes open for new kids and teens at Wednesday Night Out. Make it a point to hang out with them between supper and clubs.

When you have a group project, choose to work with someone you've never worked with before.

Sign-up to work at the chicken barbecue on September 12. You'll meet many new neighbors!

Any other idea!

Submitted by Joy Fasick for the Connect Engage Relate Team



CONGRATULATIONS!

Congratulations to Jared Myers and Rebekah Chilcote
Who were married August 29th at Slate Hill.

Safe Church Committee is Working on State Law Compliance

For the past few months a "Safe Church" committee led by Jeff Rioux and comprised of Sandy Crouse, Myrna Eshleman, Tara Hess, Lori Manivong, and Rachael Zimmerman has been meeting to update our current Child Protection Policy in order to be compliant with the newly enacted Pennsylvania State Laws regarding child abuse. "Safe Church" is a program guiding this committee towards policy compliance. Every two months Slate Hill hosts cluster meetings led by Joanne Halteman and Deb Saline. Along with committees from Diller Mennonite, Steelton Mennonite and Agape Fellowship we review the new laws and work together to write policies that fit our individual churches. After each cluster meeting the Slate Hill committee meets to revise our current policy one section at a time. The committee plans on presenting the church board with a rough draft of the policy sometime in December. The committee will also be hosting information sessions as well as congregational education for both adults and children. Our first informative session will be held Sunday, October 11th during Sunday School hour followed by a luncheon. Below is a copy of our theological statement that will accompany our updated Child Protection Policy.

Child Protection Policy Theological Statement

Slate Hill Mennonite Church is committed to being a welcoming and supportive church as well as a church that is a signpost to the Kingdom of God on earth as it is in heaven. We believe that God's concern is for all people. The Old Testament repeatedly expresses God's concern for the most vulnerable and God's desire to rescue them from harm. Jesus affirmed this mission and entrusted it to us, calling for release for the captives, sight to the blind, and freedom to those who are oppressed. Circumstances of abuse bind victims to their abuser as well as the cycle of violence that encompasses the abuse. It is our task to protect fellow church members by giving sight to those who have been blinded by the destructiveness of their behavior and freeing victims from oppression for the sake of family, relationships and community.

In a perfect world we would like to believe that such abuse would never take place in our holy establishment but statistics show many children are abused within church walls and Christian communities each year. We understand that the Slate Hill Mennonite Church body is not exempt from sin and we cannot presume that such an act could never occur within our own congregation. Though we strive to live in accordance to God's law and carry on the work of our beloved savior, Jesus Christ, we must also understand that even our fellow sisters and brothers may fall to the temptation of sin. As we are on earth we must understand this temptation and sin may lead to the abuse of children, youth and other vulnerable members that exist in our congregation.

Therefore, if anyone is in Christ, he is a new creation: the old has gone, the new has come! (2 Corinthians 5:17) There may come a time when those convicted of abusive behavior, including abuse of sexual nature, may want to turn to Christ, repent for those sins, and depart from their abusive practices. Those people are welcome here. In order to minister and support those members the best way we can, these individuals will include the assignment of a recognized "Covenant Partner". "Covenant Partners" will be thoughtfully selected to offer spiritual, emotional and practical support to promote healing and reclamation. Like all congregation members, these persons must welcome and abide by our specified and rigid Safe Church Policy.

Our commitment to the Kingdom of Peace calls us to reject violence. Yet the word of God also asks us to acknowledge where we have power, and to use that power for the well-being of mankind. We must exercise our power to resist evil and violence. We cannot pretend these forces do not exist. We must seek to be a congregation that protects all people from violence, and the Safe Church policy is intended to lead us in that work.



Thank You!!!



I recieved this card in the mail which I share with YOU! - Ulli

8/22/2015

Dear Ulli,

On behalf of the Church Board, I want to express our deep appreciation to you and the Chicken Barbecue Committee for your hard work and dedication that go into this success of the Chicken Barbecue. Many ministries have been helped by monies raised. The Blood Drive is also an important part of the day.

The benefits go beyond helping others and are beneficial to our church family as well.

Working together for a good cause is one way we "live our faith."

May God bless your efforts.

Jinda H. Munniger, Church Board Secretary and the Slate Hill Church Board

Thanks to one and all who have supported past Chicken BBQs, whether by giving of time, effort, purchase of meals, or all of the above. It's success is dependent upon teamwork and every contribution is greatly appreciated; profits are dedicated to mission support.

Don't miss the opportunity to help with the upcoming BBQ on September 12th - there are many jobs still in need of filling. It can be a most rewarding time of fellowship, and even fun! Sign up at the bulletin board to help. There are a few slots open for Friday night but we still need many willing hands on Saturday—especially for teardown and cleanup!



BOUNMA, Boualay & Khaek	09/01
FREDRICK, Ben & Jen	09/05
HAURY, David A. & Rose	09/05
ZOOK, Johnny & Julie	09/06
ZIMMERMAN, Norm & Betty	09/24
QUICKEL, Bill & Julie	09/26
HOOVER, Joseph & Deborah	09/28



BARNES, Tom	09/01
ZIMMERMAN, Betty	09/01
HESS, Olivia	9/03
ROSS, Kyla	09/05
BECK, Max	09/08
MAZZACUA, Steven	09/08
SHERTZER, Lynn	09/08
BOUNMA, Roselyn	09/09
PARKER, Allison	09/09
MANIVONG, Lori	09/10
WALTER, Nancy	09/11
LAPP, Daniel	09/13
LEHMAN, Noreen	09/13
RIOUX, Jeff	09/13
MILLER, Caleb	09/14
HORST, Phillip	09/16
WEAVER, Dale	09/16
BAUMAN, David	09/17
SHERTZER, Dawn	09/18
FREDRICK, Jen	09/19
HESS, Tara	09/21
MASHAS, Ed	09/23
GISH, Lucinda	09/24
STOLTZFUS, Lucas	09/25
FASICK, Ben	09/27
MININGER, Aaron	09/27
STATLER, Elouise	09/27
HORST, Bernie	09/28

Lord, how you have helped me
 before! You took me safely
 from my mother's womb and
 brought me through the years
 of infancy. I have depended
 upon you since birth; you have
 always been my God.

Psalm 22:10 (TLB)

Ministry Assignments for 2015-2016

Elder Team

Lynn Shertzer
Joy Fasick
Dave Bauman ('17)
Jen Fredrick ('16)
Ron Hershey ('18)
Caleb Miller ('17)

Church Board

Lamarr Widmer, Chair ('16)
John Eby, Treasurer ('18)
Lynn Shertzer
Debbie Bauman ('18)
Ray Leiter ('17)
Myrna Eshleman ('16)
Lyndon Hess ('16)
Tom Miller ('18)
Lee Roland ('18)
Ben Myers ('16)

Christian Education

Myrna Eshleman, Chair ('16)
Joelle Beck ('17)
Rhoda Hershey ('18)
Lori Monivong ('17)
Stacy Petersheim ('18)
Julia Rioux ('16)
Rachael Zimmerman ('16)

Evangelism, Peace and Service

Tom Miller, Chair ('18)
Sara Chubb ('17)
Ken Eshleman ('18)

Trustees

Lyndon Hess, Chair ('16)
Jeff Beck ('17)
Dwayne Gish ('16)
Lionel Hess ('18)
Gary Musselman ('16)
Rich Musselman ('17)
Eric Schwartzentruber ('18)
Paul Zimmerman ('17)

Worship Commission

Lee Roland, Chair ('18)
Lynn Shertzer
Judy Walter ('16)
Dale Weaver ('17)
Valerie Weaver Zercher ('18)

Stewardship

Ben Myers, Chair ('16)
John Eby ('18)
Mike Fasick ('18)
Cassandra Ly, Financial Secretary ('17)
Holly Myers ('16)
Roger Springer ('16)

Food and Fellowship

Cindy Musselman, Chair ('16)
Matt Fasick ('18)
Tara Hess ('16)
Fran Leiter ('17)
Lucy McAloose ('18)
Jen Musselman ('16)
Megan Myers ('17)

Technology Committee

Tom Ly, Chair ('18)
Chris Hawley ('18)
Jeff Krug ('17)
Isaac Shertzer ('18)
Ed White ('16)

Wellness Committee

Joy Fasick, Chair ('17)
Hope Alexander ('18)
Roger Myers ('17)
Rod Petersheim ('16)
Ben Simcox ('18)
Connie Werner ('17)

Gifts Discernment Committee

Barb Springer, Chair ('16)
Lee Roland ('16)
Stacy Petersheim ('17)
Janet Zimmerman ('17)

Lancaster Conference Delegates

Lynn Shertzer
James Burkholder ('17)
Carol Moser ('18)